

13_Block A Roof Level
63050

12_Block A Twelfth Level
59050

11_Block A Eleventh Level
56050

10_Block A Tenth Level
53050

09_Block A Ninth Level
50050

08_Block A Eighth Level
47050

07_Block A Seventh Level
44050

06_Block A Sixth Level
41050

05_Block A Fifth Level
38050

04_Block A Fourth Level
35050

03_Block A Third Level
32050

02_Block A Second Level
29050

01_Block A First Level
26050

00_Block A Ground Level
23050

-01 Car Park Level
18700

-02 Car Park Level
15700

-03 Car Park Level
12300



Materials Legend:



Planted edge to stepped terrace



Recessed balcony & glazed balustrade



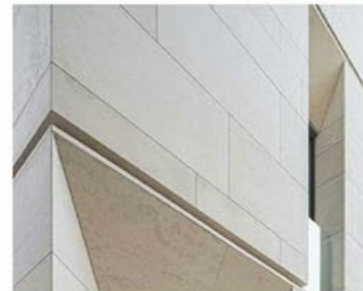
Glazed facade with expressed floor edge



Dark grey cladding with timber effect panels



White render balcony parapets



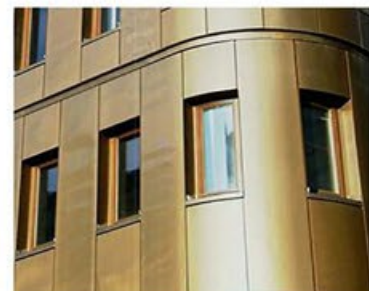
Light stone colour cladding



Timber effect cladding with shadow gap



Stone colour plinth



Brass/bronze colour cladding



Brass/bronze colour balcony/roof blade

Notes:

- All drawings are subject to Planning and Building Control consent.
- The details shown are for design intent purposes only and are subject to further design development with suppliers and sub-contractors
- Proposals subject to consultation and approval from Local Authority Building Control or an Approved Inspector
- All setting out dimensions should be checked on-site prior to construction and any discrepancies and/or omissions should be reported to the Architect immediately

0 1 2 3 4 5m
Scale 1:100

Drawn By:
KK

Date:
01/25/17

Checked By:
Approver

Date:
01/25/17

G 30.01.20 Window surrounds added to render facades
F 17.01.20 MMA application
E 21.10.18 Amended for planning
D 09.04.18 Vertical breaks introduced into horizontal balconies, lower part of piazza facade aligned to upper floors
C 10.08.17 Updated to Latest Plans
B 05.04.17 Amended piazza facade / Raked balcony added to tower element of Block A
A 22.02.17 Minor amendments for Pre- App Pack 3

PL JT
PL JT
PL JT
PL JT
OM JT
KK JT
Drawn Chkd

Issued for:

PLANNING

Project/Client:
Winter Gardens
Bournemouth

Drawing:
Block A2- North Elevation

Project No:
19004

Scale:
1:100 @ A1

Dwg No:
705

Rev: G

BrightSPACE
architects

27 Glasshouse Studios, Fryern Court Road, Fordingbridge, Hampshire, SP6 1QX
T: (01425) 655806/653639
www.brightspacearchitects.com
© BrightSpace Architects Ltd. Contractors must work only to figured dimensions which are to be checked on site. Registered Office: 17 Northover Rd, Pennington, Lymington, Hampshire, SO41 8GU. Registered Number: 07399058